

Using prioritizr for Costa Rica's big enchilada map/ **Uso de prioritizr para la gran enchilada de Costa Rica**



prioritizr.net

Richard Schuster



richard.schuster@glel.carleton.ca

What data is used?/ ¿Qué datos se utilizan?

Theme	Name	Protect	Manage	Restore	Urban Green
CBD	Amphibians (range restricted)	1	0.5	1.5	0
CBD	Biological corridors	1	0.7	1.3	0
CBD	Birds (range restricted)	1	0.75	1.5	0
CBD	Mammals (range restricted)	1	0.5	1.5	0
CBD	Protection Suitability	1	0	0.5	0
CBD	Ramsar sites	1	0	1.5	0
CBD	Reptiles (range restricted)	1	0.5	1.5	0
SDG/CBD	Mangroves	1	0	1.5	0
SDG/CBD	Wetlands	1	0	1.5	0
SDG	Agricultural Suitability	0	1	0	0
SDG	Forest Water Yield	1	0.5	1.5	0
SDG	Opportunities to Reduce Freshwater Flood Risk	1	0.2	1.5	0.2
SDG	Opportunities to Reduce the Marine Flood Risk	1	0.2	1.5	0.2
SDG	Opportunities to Reduce Water Contamination	0.5	1.5	1	0
SDG	Poverty	0.3	1	0.3	1
SDG	Urban Greening Opportunities	0	0	1	1
SDG	Water Importance	1	0.5	1.5	0
UNFCCC	Potential Soil Sequestration - high	0	1	0	0
UNFCCC	Terrestrial Biomass Carbon	1	0.5	1.5	0
UNFCCC	Terrestrial Soil Carbon	1	0.75	1.25	0

How is the analysis setup?/ Como se configura el análisis

File: 03_prioritizr_CR.R

Analysis for non-technical users/ Análisis para usuarios sin experiencia técnica



I AM ELSA Costa Rica v0.9

Action Mapping for Essential Life Support Areas

Run Optimization

Global parameters:

What cost metric should be used:

Area

Do you want to lock in the following features?

Minimum targets PA locked in: protect (26%)

Minimum targets PES locked in: protect (19%), restore (3%), manage (1%)

Minimum targets PA + PES locked in: protect (40%), restore (3%), manage (1%)

Protected Areas

Payment for Ecosystem Services

Given the current problem formulations values need to be set ≥ 0.001 .

Protect target

20

Restore target

0.001

Manage target

0.001

Urban Green target

0.001

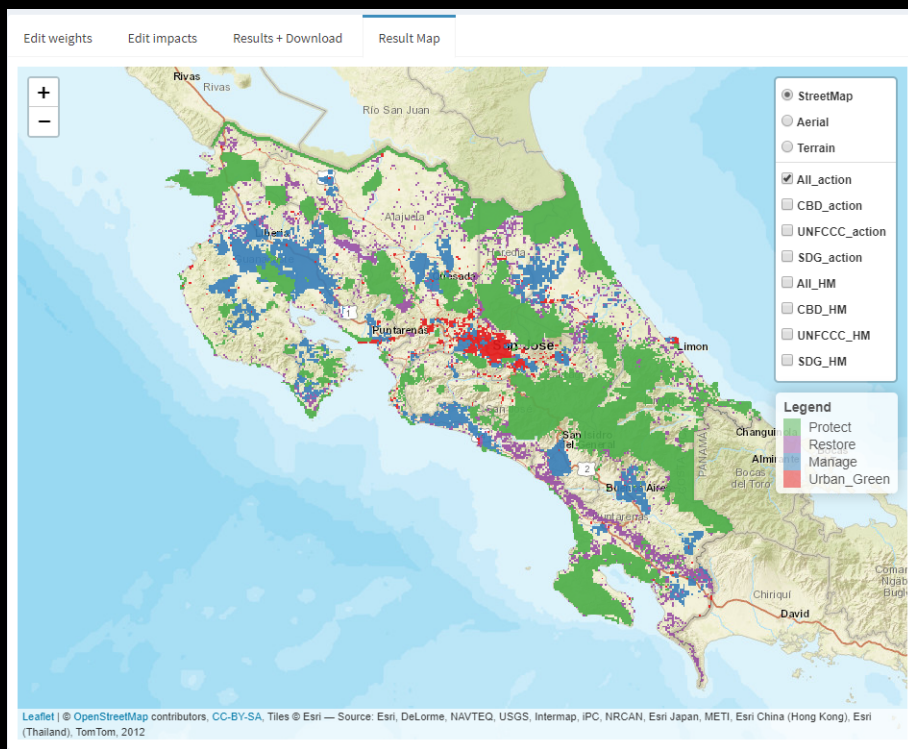
Edit weights | Edit impacts | Results + Download | Result Map

Information about weights to go here

	Name	Theme	weight
1	Amphibians (range restricted)	CBD	1.00
2	Biodiversity Intactness Index	CBD	1.00
3	Biological corridors	CBD	1.00
4	Birds (range restricted)	CBD	1.00
5	Mammals (range restricted)	CBD	1.00
6	Protection Suitability	CBD	1.00
7	Ramsar sites	CBD	1.00
8	Reptiles (range restricted)	CBD	1.00
9	Agricultural Suitability	SDG	1.00
10	Forest Water Yield	SDG	1.00
11	Opportunities to Reduce Freshwater Flood Risk	SDG	1.00
12	Opportunities to Reduce the Marine Flood Risk	SDG	1.00
13	Opportunities to Reduce Water Contamination	SDG	1.00
14	Poverty	SDG	1.00
15	Urban Greening Opportunities	SDG	1.00
16	Water Importance	SDG	1.00
17	Mangroves	SDG/CBD	1.00
18	Wetlands	SDG/CBD	1.00
19	Potential Soil Sequestration - high	UNFCCC	1.00
20	Terrestrial Biomass Carbon	UNFCCC	1.00
21	Terrestrial Soil Carbon	UNFCCC	1.00



Analysis for non-technical users/ Análisis para usuarios sin experiencia técnica



Result Summary Table

Placeholder for result summary table text. Numeric values are in percent.

	Name	Theme	All_action	CDB_action	UNFCCC_action	SDG_action
1	Amphibians (range restricted)	CBD	47	49	44	48
2	Biodiversity Intactness Index	CBD	30	30	30	30
3	Biological corridors	CBD	28	46	29	28
4	Birds (range restricted)	CBD	48	51	47	49
5	Mammals (range restricted)	CBD	49	50	48	50
6	Protection Suitability	CBD	59	61	60	59
7	Ramsar sites	CBD	94	94	90	93
8	Reptiles (range restricted)	CBD	46	46	45	46
9	Agricultural Suitability	SDG	12	11	12	11

Showing 1 to 9 of 21 entries

Previous 2 3 Next

Results download (output layers):

Results download (summary table):

Code review of Shiny app/ Revisión del código de la app Shiny